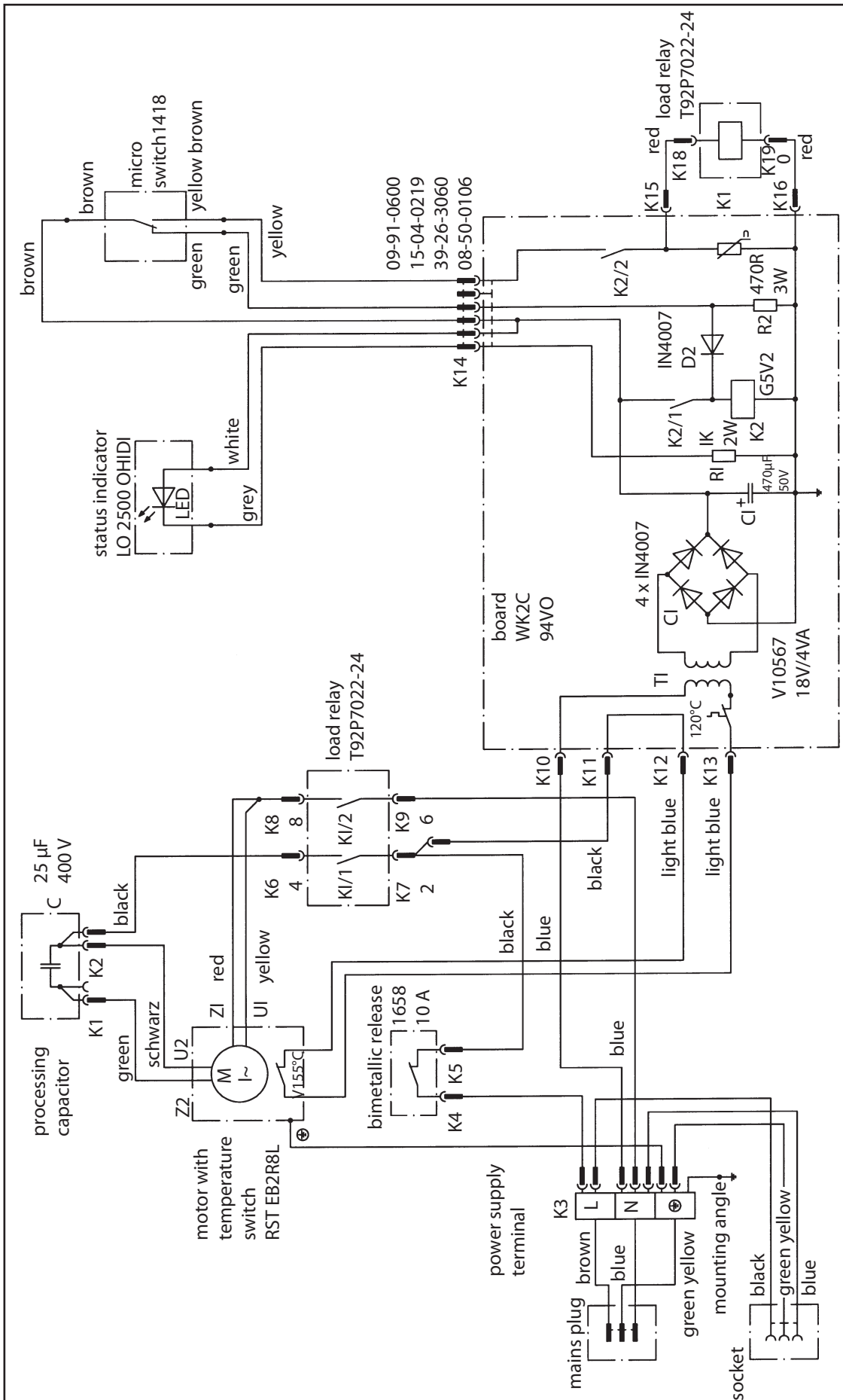


11.8 CIRCUIT DIAGRAM

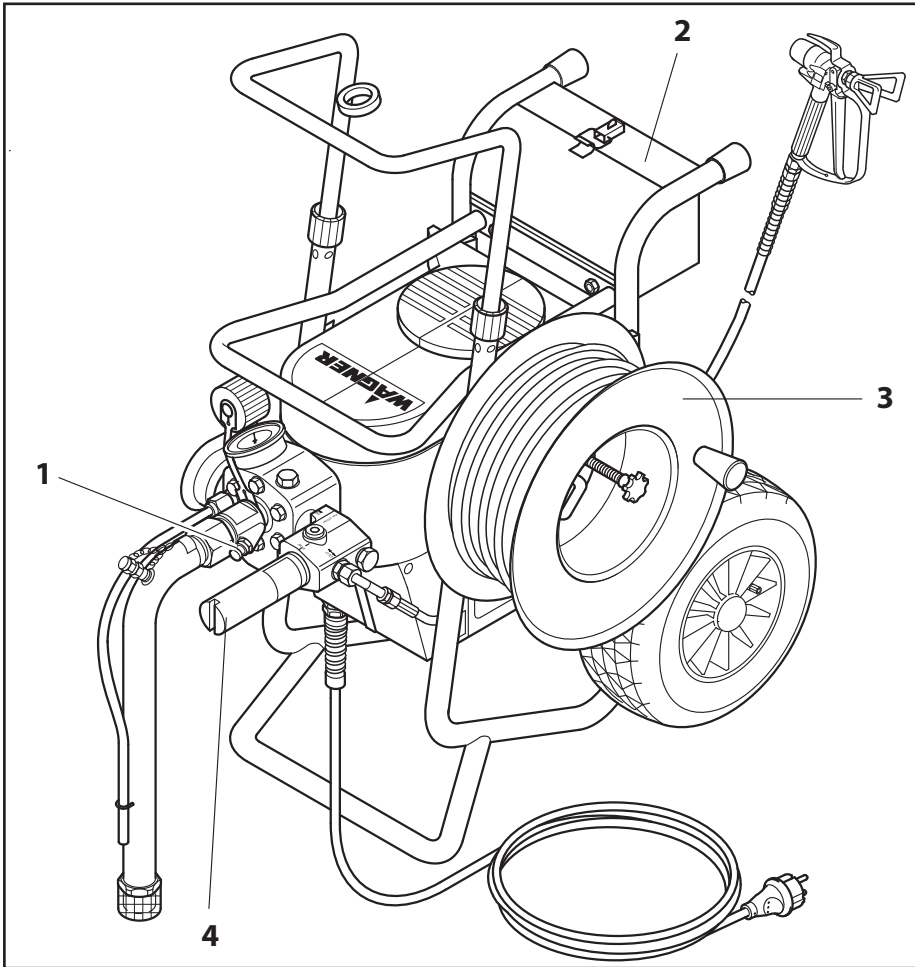


12. ACCESSORIES AND SPARE PARTS

12.1 ACCESSORIES FOR SUPER FINISH 27 AND 31

Item	SuperFinish 27 Order no.	SuperFinish 31 Order no.	Description
			Accessories illustration, see page 44
1	0341 705	-----	Inlet valve – trigger housing
2	0341 713	-----	Tool box
3	0341 910	0341 910	Hose drum (without high-pressure hose) for 30 m high-pressure hose DN 6 mm
4	0070 212 0070 317 0070 344 0070 326	0070 212 0070 317 0070 344 0070 326	High-pressure filter 200 meshes, 0.085 mm mesh width The high-pressure filter is suitable as a fine filter, each tuned to the tip used. Filter insert 200 meshes (tip size under 011/0.28 mm) Filter insert 100 meshes (tip size over 011/0.28 mm) Filter insert 70 meshes (tip size over 015/0.38 mm)
			Spray gun accessories and tips, see page 48
			Accessories illustration, see page 103
5	0502 166 0296 388	0502 166 0296 388	Spray gun AG-14 (stainless steel model) Spray gun AG-08 (aluminium model)
6	0296 441 0296 443 0296 442 0296 444	0296 441 0296 443 0296 442 0296 444	Length 120cm; G thread 7/8" Length 120cm; F thread 11/16" Length 200cm; G thread 7/8" Length 200cm; F thread 11/16"
7	0097 057	0097 057	Injection lance for regeneration of concrete
8	0345 010	0345 010	Inline Roller IR-100
9	9984 510 9984 507 9984 562	9984 510 9984 507 9984 562	High-pressure hose DN 4 mm, 7.5 m with stainless steel nipple High-pressure hose DN 6 mm, 15 m for dispersion High-pressure hose DN 6 mm, 30 m for dispersion
10	0034 030	0034 030	Double socket for coupling high-pressure hoses
11	0341 263	0341 263	Suction system QuickClean, filter mesh width 1 mm
12	0097 531	0097 531	Filter bag, mesh width 0.3 mm
13	0341 265	0341 265	Upper hopper fittings, 5 litres
14	0097 258 0097 259	0097 258 0097 259	Hopper filling sieve for upper hopper 5 litres. Prevents filling of rough particles from the container. Through this suction problems are avoided. Sieve package (5 pcs) for paint Sieve package (5 pcs) for dispersion
15	0341 266	0341 266	Upper hopper fittings, 20 litres
16	0097 260 0097 261	0097 260 0097 261	Hopper filling sieve for upper hopper 20 litres. Prevents filling of rough particles from the container. Through this suction problems are avoided. Sieve package (5 pcs) for paint Sieve package (5 pcs) for dispersion
17	0034 950 0034 952 0034 951	0034 950 0034 952 0034 951	Metex-Reuse Reuse for pre-filtering of coating material in vessel. Place suction pipe in the reuse. Sieve package (5 pcs) for paint Sieve package (5 pcs) for dispersion
18	0037 607 0003 756 0097 521 0017 408	0037 607 0003 756 0097 521 0017 408	Filter disks Upper hopper, 5 litres Filter disk, mesh width 0.8 mm Filter disk, mesh width 0.4 mm Filter disks Upper hopper, 20 litres Filter disk, mesh width 0.8 mm Filter disk, mesh width 0.4 mm
19	0034 660	0034 660	Suction system (flexible) for paint
20	0034 630	0034 630	Suction system (flexible) for dispersion
	0340 720	0340 720	Concrete regeneration set (without diagram)

Accessories illustration for Super Finish 27 and 31



12.2 SPARE PARTS LIST PUMP HEAD SUPER FINISH 27 AND 31 (SPARE PARTS DIAGRAM, SEE PAGE 104)

Item	SuperFinish 27 Order no.	SuperFinish 31 Order no.	Description
1	-----	0341 241	Inlet valve trigger
2	-----	0341 316	Stripper
3	-----	9971 486	O-ring 4 x 2
4	0340 339	0340 339	Inlet
5	-----	0341 335	Trigger housing
6	0344 326	-----	Inlet valve housing
7	0341 336	0341 336	Clasp
8	0341 331	0341 331	Sealing ring
9	0341 330	0341 330	Sealing ring
10	0341 247	0341 247	Inlet valve
11	9990 865	9990 865	Dust protection cap
12	2349 975	2349 975	Paint section
13	0341 248	0341 248	Relief valve
14	9974 031	9974 031	O-ring 12 x 1.3
15	0341 414	0341 414	Disk
16	0341 242	0341 242	Diaphragm with insert
18	0341 711	0341 710	Screw flange (item 19 -> 23)
19	0340 361	0340 361	Groove nut
20	0340 368	0340 368	Disk
21	0340 359	0340 359	Rubber disc
22	9971 469	9971 469	O-ring 35 x 2
23	0340 358	0340 358	Ring
24	0341 315	0341 315	Flange ring
25	0340 312	0034 357	Pressure spring
26	0344 327	-----	Spring plate
27	0341 482	0341 311	Piston
28	9991 797	9991 797	Manometer 0 - 400 bar (0 - 40 MPa)
29	9970 109	9970 109	Sealing ring
30	0341 702	0341 702	Outlet valve, service set (item 31 -> 37)
31	0341 347	0341 347	Sealing ring
32	0341 327	0341 327	Outlet valve seat
33	9941 501	9941 501	Ball 11
34	0253 405	0253 405	Spring support ring
35	0341 326	0341 326	Pressure spring
36	9971 470	9971 470	O-ring 20 x 2
37	0341 328	0341 328	Clasp
39	0341 325	0341 325	Valve guide
41	0341 488	0341 488	Anode ring
42	9970 103	9970 103	Sealing ring 16 x 20 x 1.5

Item	SuperFinish 27 Order no.	SuperFinish 31 Order no.	Description
43	0341 350 0344 337	0341 350 -----	Double socket M 16 x 1.5 Double socket NPSM 1/4
44	9920 204	9920 204	Disk 13 DIN 433 (6)
45	9900 217	9900 217	Hexagonal screw M 12 x 60 DIN 931 (6)
46	2350 165	2350 165	Service Kit Paint sec- tion

12.3 SPARE PARTS LIST TROLLEY (SPARE PARTS DIAGRAM, SEE PAGE 105)

Item	SuperFinish 27 Order no.	SuperFinish 31 Order no.	Description
1	0341 211	0341 211	Trolley
2	9920 701	9920 701	Disk
3	0348 349	0348 349	Wheel, pneumatic-tyred
4	9994 902	9994 902	Wheel cap
5	9920 301	9920 301	Disk 8.4
6	9990 866	9990 866	Rubber cap
7	-----	9900 106	Hexagonal screw M 6 x 12
8	-----	0341 372	Tool box
9	-----	9920 304	Disk 6.4
10	-----	9910 102	Hexagonal nut M 6

12.4 SPARE PARTS LIST SUCTION SYSTEM (SPARE PARTS DIAGRAM, SEE PAGE 105)

Item	Order no.	Description
	0341 263	Suction system QuickClean
1	0341 435	Filter, mesh width 1 mm
2	0253 211	Return pipe

12.5 SPARE PARTS LIST UPPER HOPPER, 5 LITRES (SPARE PARTS DIAGRAM, SEE PAGE 105)

Item	Order no.	Description
	0341 265	Upper hopper fittings, 5 litres
1	0340 901	Cover
2	9902 306	Combination sheet metal screw 3.9 x 13
3	0037 607	Filter disk, mesh width 0.8 mm
4	0340 904	Upper hopper
5	0340 908	Return pipe

12.6 SPARE PARTS LIST UPPER HOPPER, 20 LITRES (SPARE PARTS DIAGRAM, SEE PAGE 105)

Item	Order no.	Description
1	0341 266	Upper hopper fittings, 20 litres
2	0097 269	Upper hopper without cover
3	0097 270	Cover
5	9902 306	Combination sheet metal screw 3.9 x 13
6	0097 521	Filter disk, mesh width 0.8 mm

Item	Order no.	Description
7	9922 609	Securing ring 37 x 1.5
9	0037 776	Pressure spring
10	9941 509	Ball 30
13	0097 295	Return pipe
15	0097 271	Container adapter
16	0037 756	Valve support
17	9971 065	O-ring 44 x 3
19	0097 522	Container acceptance

12.7 SPARE PARTS LIST - PUMP AGGREGATE SUPER FINISH 27 AND 31

(SPARE PARTS DIAGRAM, SEE PAGE 106)

Item	SuperFinish 27 Order no.	SuperFinish 31 Order no.	Description
1	9900 336	9900 336	Cylinder head screw M 6 x 40 (2)
3	0340 303	0340 303	Foot (2)
4	0341 208	0341 208	Housing
5	9905 111	9905 111	Oval head screw 5 x 20 (9)
6	9905 112	9905 112	Screw M 6 x 20 (4)
7	9950 241	9950 241	Socket
8	9950 242	9950 242	Seal
9	9900 408	9900 408	Screw M 6 x 16
10	0340 302	0340 302	Connecting plate
11	0341 353	0341 353	Toothed belt
12	0341 352	0341 352	Belt pulley
13	0341 706	0341 706	Eccentric shaft, item 14 -> 21
14	3056 464	3056 464	Securing ring 72 x 2.5
15	9970 532	9970 532	Shaft seal 40 x 72 x 10
16	0341 324	0341 324	Eccentric shaft
17	9960 151	9960 151	Groove ball bearing 6207
18	9922 518	9922 518	Securing ring 35 x 1.5
19	9960 431	9960 431	Roller bearing NUTR 25
20	9922 506	9922 506	Securing ring 25 x 1.2
21	9960 432	9960 432	Cylinder roller bearing NJ 202
24	9900 315	9900 315	Cylinder head screw M 6 x 25 (4)
25	9920 806	9920 806	Disk 6,4 (4)
26	0341 225	0341 220	Hydraulic housing
27	9993 105	9993 105	Nipple
28	0341 445	0341 445	Return hose
29	0288 317	0288 317	O-ring 6.07 x 1.78
30	0288 309	0288 309	Angle piece
31	0341 446	0341 446	Suction hose
32	0341 307	0341 307	Seal
33	0341 309	0341 309	Cover
34	3050 858	3050 858	Disk 5,3 (6)

Item	SuperFinish 27 Order no.	SuperFinish 31 Order no.	Description
35	9906 007	9906 007	Cylinder head screw M 5 x 45 (6)
36	0341 348	0341 348	Oil dip-stick
37	9971 146	9971 146	O-ring 16 x 2
38	0341 349	0341 349	Oil cap screw
39	9953 144	9953 144	Capacitor 25 MF/400 V (230 V~, 50 Hz)
40	9900 341	9900 341	Cylinder head screw M 8 x 12
41	0341 230	0341 230	Electric bracket
43	0341 351	0341 351	Belt disk
44	0341 398	0341 398	Ventilator
45	9922 508	9922 508	Securing ring 14 x 1
46	0341 397	0341 397	Ventilator hood
47	9921 504	9921 504	Spring ring 4
48	9900 737	9900 737	Cylinder head screw M 4 x 6
49	0341 201 0341 204	0341 201 -----	Electric motor 230 V~, 50 Hz Electric motor 220 V~, 60 Hz
51	0340 354	0340 354	Seal
53	0261 352	0261 352	Unit connection line H07RN - F3G 1.5 - 6 m
54	9951 074	9951 074	Cable screw connection
55	9951 075	9951 075	Nut
56	0341 235	0341 235	Multifunction switch
57	3050 639	3050 639	Cylinder head screw M 4 x 40 (3)
58	0341 237	0341 237	Regulating knob
59	0341 413	0341 413	Stop screw
62	9971 365	9971 365	O-ring 9,25 x 1.78
63	0340 222*	0340 222*	Regulating unit
64	0010 861*	0010 861*	Pressure spring
65	0010 858*	0010 858*	Clamp
66	0010 859*	0010 859*	Stop sleeve
67	0158 251*	0158 251*	Pressure regulating knob
68	0340 223*	0340 223*	Pressure regulating valve
69	0340 490	0340 490	Hood
70	2315 382	2315 382	Pan head screw M4x10
	9984 510	9984 510	without diagram High-pressure hose DN 4 mm, 7,5 m with stainless steel nipple
	9984 507	9984 507	High-pressure hose DN 6 mm, 15 m for dispersion
	9984 562	9984 562	High-pressure hose DN 6 mm, 30 m for dispersion

*When exchanging these parts the operating pressure must be reset by the **customer service**.

13. APPENDIX

13.1 SELECTION OF TIP

To achieve faultless and rational working, the selection of the tip is of the greatest importance. In many cases the correct tip can only be determined by means of a spraying test.

Some rules for this:

The spray jet must be even.

If streaks appear in the spray jet the spraying pressure is either too low or the viscosity of the coating material too high.

Remedy:

Increase pressure or dilute coating material. Each pump conveys a certain quantity in proportion to the size of the tip:

The following principle is valid: large tip = low pressure
 small tip = high pressure

There is a large range of tips with various spraying angles.


13.2 SERVICING AND CLEANING OF AIRLESS HARD-METAL TIPS

Standard tips

If a different tip type has been fitted, then clean it according to manufacturer's instructions.

The tip has a bore processed with the greatest precision. Careful handling is necessary to achieve long durability. Do not forget the fact that the hard-metal insert is brittle! Never throw the tip or handle with sharp metal objects.

The following points must be observed to keep the tip clean and ready for use:

1. Switch off unit  (OFF).
2. Dismount the tip from the spray gun.
3. Place tip in an appropriate cleaning agent until all coating material residue is dissolved.
4. If there is pressure air, blow out tip.
5. Remove any residue by means of a sharp wooden rod (toothpick).
6. Check the tip with the help of a magnifying glass and, if necessary, repeat points 3 to 5.

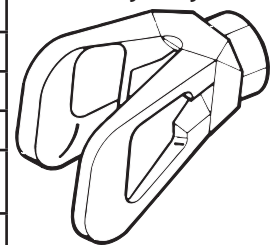
13.3 SPRAY GUN ACCESSORIES



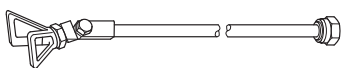
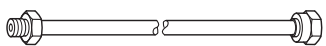
Flat jet adjusting tip
up to 250 bar (25 MPa)

Tip marking	Bore mm	Spray width at about 30 cm removal of spray object Pressure 100 bar (10 MPa)	Use	Flat jet adjusting tip Order no.
15	0,13 - 0,46	5 - 35 cm	Paints	0999 057
20	0,18 - 0,48	5 - 50 cm	Paints, fillers	0999 053
28	0,28 - 0,66	8 - 55 cm	Paints, dispersions	0999 054
41	0,43 - 0,88	10 - 60 cm	Rust protection paints - dispersions	0999 055
49	0,53 - 1,37	10 - 40 cm	Large-area coats	0999 056

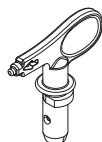
Contact protection for the flat jet adjustment tip



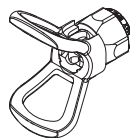
Order no. **0097 294**

Tip extension with slewable knee joint (without tip)		Tip extension with	
Length 100 cm Length 200 cm Length 300 cm	Order no. 0096 015 Order no. 0096 016 Order no. 0096 017	Length 15 cm Length 30 cm Length 45 cm Length 60 cm	Order no. 0999 320 Order no. 0999 321 Order no. 0999 322 Order no. 0999 323

13.4 Airless tip table



**Wagner
TradeTip 3 tip**
up to 270 bar
(27 MPa)



without tip
F thread (11/16 - 16 UN)
for Wagner spray guns
Order no. 0289391

without tip
G thread (7/8 - 14 UN)
for Graco/Titan spray guns
Order no. 0289390



All of the tips in the table below are supplied together with the appropriate gun filter.

Application	Tip marking	Spray angle	Bore inch / mm	Spraying width mm 1)	Gun filter	Order no.
Water-thinnable and solvent-based paints and varnishes, oils, separating agents	107	10°	0.007 / 0.18	100	red	0553107
	207	20°	0.007 / 0.18	120	red	0553207
	307	30°	0.007 / 0.18	150	red	0553307
	407	40°	0.007 / 0.18	190	red	0553407
	109	10°	0.009 / 0.23	100	red	0553109
	209	20°	0.009 / 0.23	120	red	0553209
	309	30°	0.009 / 0.23	150	red	0553309
	409	40°	0.009 / 0.23	190	red	0553409
	509	50°	0.009 / 0.23	225	red	0553509
	609	60°	0.009 / 0.23	270	red	0553609
Synthetic-resin paints PVC paints	111	10°	0.011 / 0.28	100	red	0553111
	211	20°	0.011 / 0.28	120	red	0553211
	311	30°	0.011 / 0.28	150	red	0553311
	411	40°	0.011 / 0.28	190	red	0553411
	511	50°	0.011 / 0.28	225	red	0553511
	611	60°	0.011 / 0.28	270	red	0553611
Paints, primers Fillers	113	10°	0.013 / 0.33	100	red	0553113
	213	20°	0.013 / 0.33	120	red	0553213
	313	30°	0.013 / 0.33	150	red	0553313
	413	40°	0.013 / 0.33	190	red	0553413
	513	50°	0.013 / 0.33	225	red	0553513
	613	60°	0.013 / 0.33	270	red	0553613
	813	80°	0.013 / 0.33	330	red	0553813
Fillers Rust protection paints	115	10°	0.015 / 0.38	100	yellow	0553115
	215	20°	0.015 / 0.38	120	yellow	0553215
	315	30°	0.015 / 0.38	150	yellow	0553315
	415	40°	0.015 / 0.38	190	yellow	0553415
	515	50°	0.015 / 0.38	225	yellow	0553515
	615	60°	0.015 / 0.38	270	yellow	0553615
	715	70°	0.015 / 0.38	300	yellow	0553715
	815	80°	0.015 / 0.38	330	yellow	0553815
	Rust protection paints Latex paints Dispersions	117	10°	0.017 / 0.43	100	yellow
217		20°	0.017 / 0.43	120	yellow	0553217
317		30°	0.017 / 0.43	150	yellow	0553317
417		40°	0.017 / 0.43	190	yellow	0553417
517		50°	0.017 / 0.43	225	yellow	0553517
617		60°	0.017 / 0.43	270	yellow	0553617
717		70°	0.017 / 0.43	300	yellow	0553717
817		80°	0.017 / 0.43	330	yellow	0553817
Rust protection paints Latex paints Dispersions	219	20°	0.019 / 0.48	120	white	0553219
	319	30°	0.019 / 0.48	150	white	0553319
	419	40°	0.019 / 0.48	190	white	0553419
	519	50°	0.019 / 0.48	225	white	0553519
	619	60°	0.019 / 0.48	270	white	0553619
	719	70°	0.019 / 0.48	300	white	0553719
	819	80°	0.019 / 0.48	330	white	0553819
	919	90°	0.019 / 0.48	385	white	0553919
	Flame retardant	221	20°	0.021 / 0.53	120	white
321		30°	0.021 / 0.53	150	white	0553321
421		40°	0.021 / 0.53	190	white	0553421
521		50°	0.021 / 0.53	225	white	0553521
621		60°	0.021 / 0.53	270	white	0553621
721		70°	0.021 / 0.53	300	white	0553721
821		80°	0.021 / 0.53	330	white	0553821

1) Spray width at about 30 cm to the object and 100 bar (10 MPa) pressure with synthetic-resin paint 20 DIN seconds.

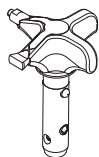


All of the tips in the table below are supplied together with the appropriate gun filter.

Application	Tip marking	Spray angle	Bore inch / mm	Spraying width mm 1)	Gun filter	Order no.
Roof coatings	223	20°	0.023 / 0.58	120	white	0553223
	323	30°	0.023 / 0.58	150	white	0553323
	423	40°	0.023 / 0.58	190	white	0553423
	523	50°	0.023 / 0.58	225	white	0553523
	623	60°	0.023 / 0.58	270	white	0553623
	723	70°	0.023 / 0.58	300	white	0553723
	823	80°	0.023 / 0.58	330	white	0553823
	Thick-film materials, Corrosion protection Spray filler	225	20°	0.025 / 0.64	120	white
325		30°	0.025 / 0.64	150	white	0553325
425		40°	0.025 / 0.64	190	white	0553425
525		50°	0.025 / 0.64	225	white	0553525
625		60°	0.025 / 0.64	270	white	0553625
725		70°	0.025 / 0.64	300	white	0553725
825		80°	0.025 / 0.64	330	white	0553825
227		20°	0.027 / 0.69	120	white	0553227
327		30°	0.027 / 0.69	150	white	0553327
427		40°	0.027 / 0.69	190	white	0553427
527		50°	0.027 / 0.69	225	white	0553527
627		60°	0.027 / 0.69	270	white	0553627
827		80°	0.027 / 0.69	330	white	0553827
229		20°	0.029 / 0.75	120	white	0553229
329		30°	0.029 / 0.75	150	white	0553329
429		40°	0.029 / 0.75	190	white	0553429
529		50°	0.029 / 0.75	225	white	0553529
629		60°	0.029 / 0.75	270	white	0553629
231		20°	0.031 / 0.79	120	white	0553231
331		30°	0.031 / 0.79	150	white	0553331
431		40°	0.031 / 0.79	190	white	0553431
531		50°	0.031 / 0.79	225	white	0553531
631		60°	0.031 / 0.79	270	white	0553631
731		70°	0.031 / 0.79	300	white	0553731
831		80°	0.031 / 0.79	330	white	0553831
233		20°	0.033 / 0.83	120	white	0553233
333		30°	0.033 / 0.83	150	white	0553333
433		40°	0.033 / 0.83	190	white	0553433
533		50°	0.033 / 0.83	225	white	0553533
633		60°	0.033 / 0.83	270	white	0553633
235		20°	0.035 / 0.90	120	white	0553235
335		30°	0.035 / 0.90	150	white	0553335
435		40°	0.035 / 0.90	190	white	0553435
535		50°	0.035 / 0.90	225	white	0553535
635		60°	0.035 / 0.90	270	white	0553635
735		70°	0.035 / 0.90	300	white	0553735
439		40°	0.039 / 0.99	190	white	0553439
539		50°	0.039 / 0.99	225	white	0553539
639		60°	0.039 / 0.99	270	white	0553639
Heavy duty applications		243	20°	0.043 / 1.10	120	green
	443	40°	0.043 / 1.10	190	green	0553443
	543	50°	0.043 / 1.10	225	green	0553543
	643	60°	0.043 / 1.10	270	green	0553643
	445	40°	0.045 / 1.14	190	green	0553445
	545	50°	0.045 / 1.14	225	green	0553545
	645	60°	0.045 / 1.14	270	green	0553645
	451	40°	0.051 / 1.30	190	green	0553451
	551	50°	0.051 / 1.30	225	green	0553551
	651	60°	0.051 / 1.30	270	green	0553651
	252	20°	0.052 / 1.32	120	green	0553252
	455	40°	0.055 / 1.40	190	green	0553455
	555	50°	0.055 / 1.40	225	green	0553555
	655	60°	0.055 / 1.40	270	green	0553655
	261	20°	0.061 / 1.55	120	green	0553261
	461	40°	0.061 / 1.55	190	green	0553461
	561	50°	0.061 / 1.55	225	green	0553561
	661	60°	0.061 / 1.55	270	green	0553661
	263	20°	0.063 / 1.60	120	green	0553263
	463	40°	0.063 / 1.60	190	green	0553463
	565	50°	0.065 / 1.65	225	green	0553565
	665	60°	0.065 / 1.65	270	green	0553665
	267	20°	0.067 / 1.70	120	green	0553267
	467	40°	0.067 / 1.70	190	green	0553467

1) Spray width at about 30 cm to the object and 100 bar (10 MPa) pressure with synthetic-resin paint 20 DIN seconds.

2SpeedTip



The innovative changeover nozzle from WAGNER combines two nozzle cores into one nozzle.

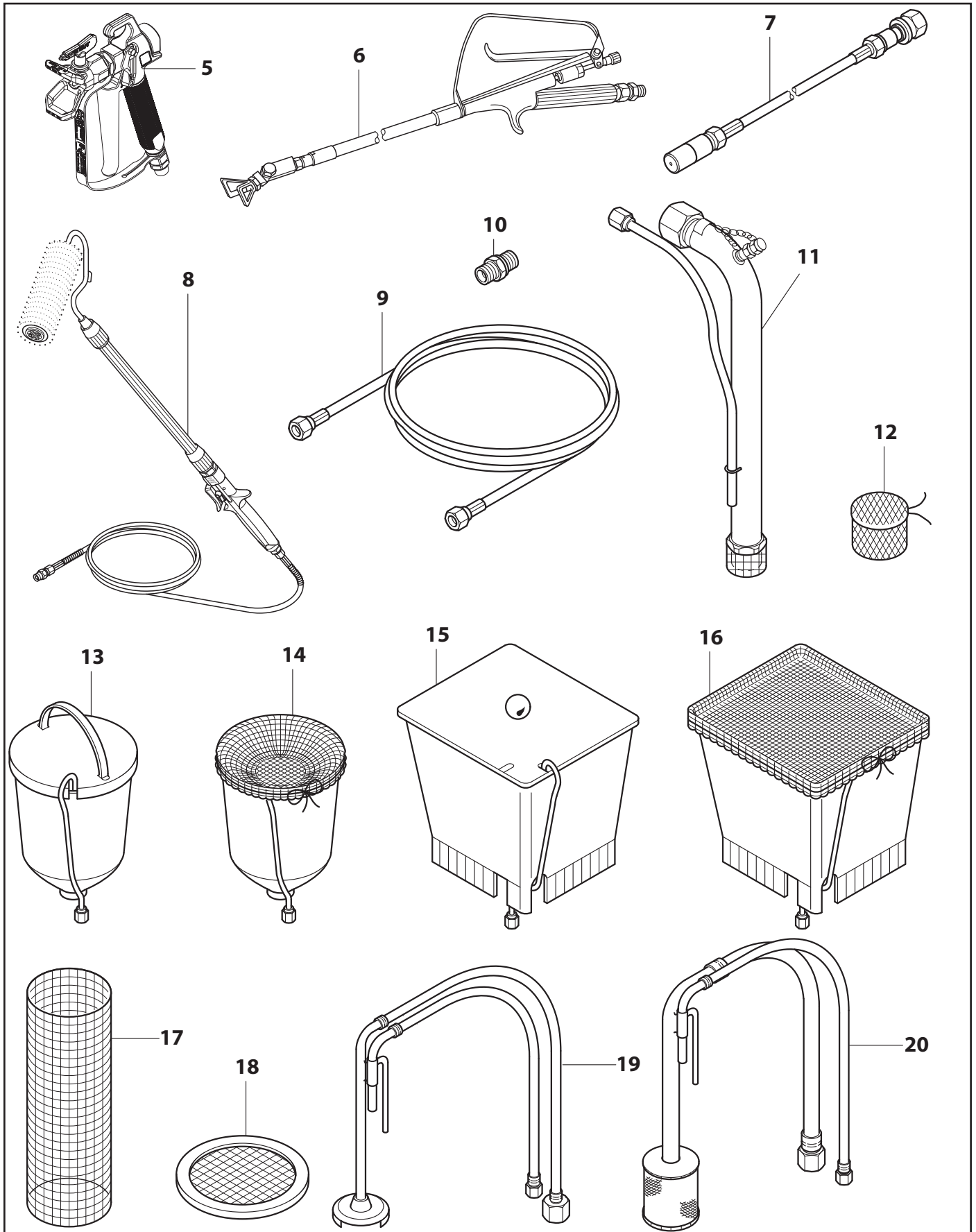


2 Speed Tip holder
Order no. 0271065

Tip table

Object size	Painting material		
	Lacquer (L)	Emulsion (D)	Filler (S)
Small		D5 Nozzles: 111 / 415 Order no. 0271 062	S5 Nozzles: 225 / 629 Order no. 0271 064
		D7 Nozzles: 113 / 417 Order no. 0271 063	
	L10 Nozzles: 208 / 510 Order no. 0271 042	D10 Nozzles: 111 / 419 Order no. 0271 045	S10 Nozzles: 527 / 235 Order no. 0271 049
Medium	L20 Nozzles: 210 / 512 Order no. 0271 043	D20 Nozzles: 115 / 421 Order no. 0271 046	S20 Nozzles: 539 / 243 Order no. 0271 050
Large	L30 Nozzles: 212 / 514 Order no. 0271 044	D30 Nozzles: 115 / 423 Order no. 0271 047	S30 Nozzles: 543 / 252 Order no. 0271 051
X-Large		D40 Nozzles: 117 / 427 Order no. 0271 048	
Recommended gun filter	red	white	-

Super Finish 27 • 31



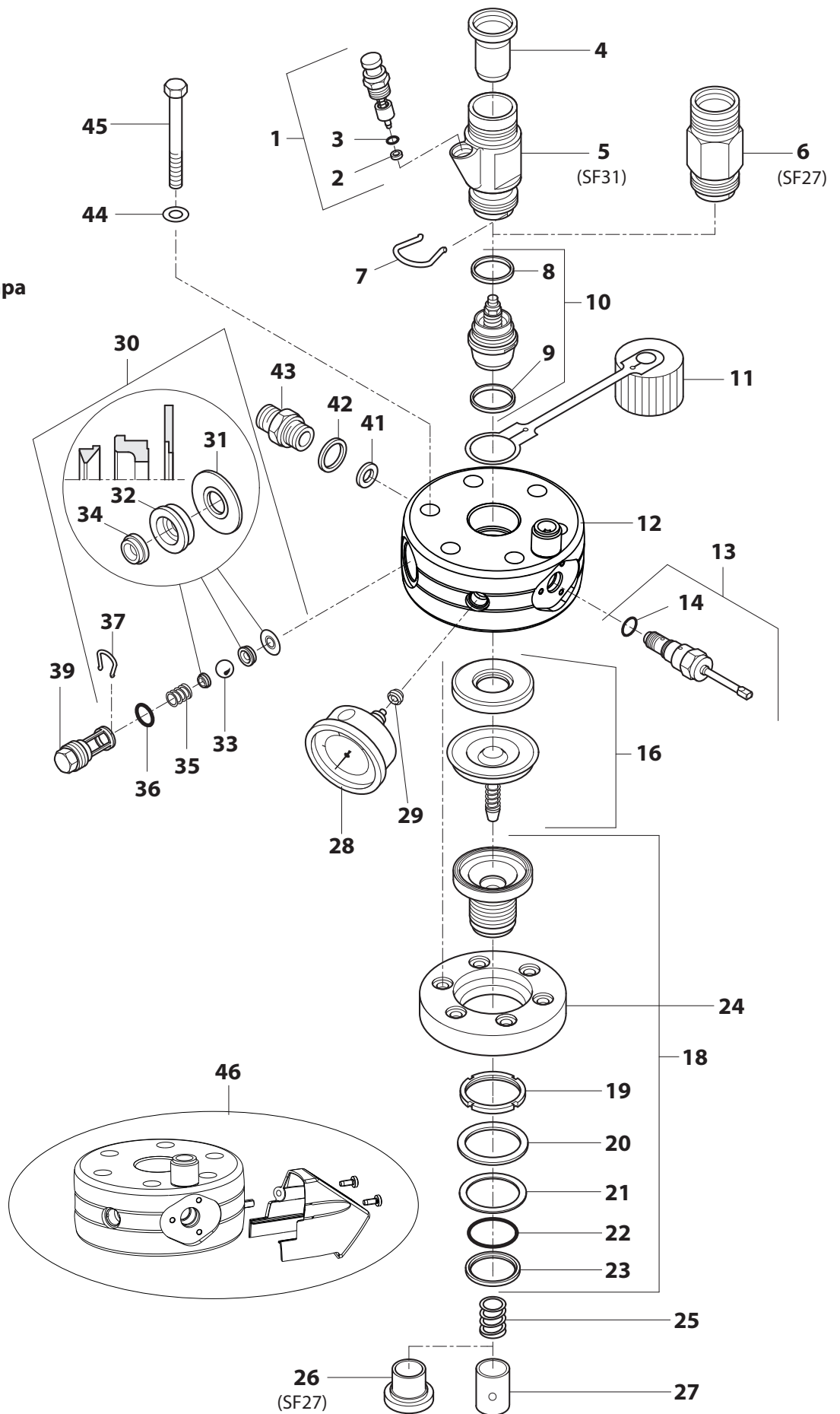
Super Finish 27 • 31

(D) Pumpenkopf

(GB) Pump head

(F) Tête de pompe

(I) Testa della pompa



(D) Ersatzteilbild **(GB)** Spare parts diagram

(F) Illustration des pièces de rechange

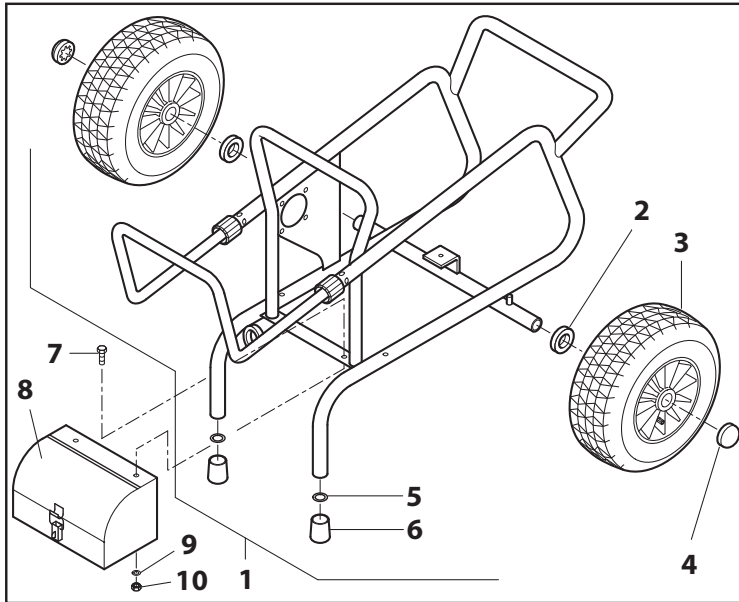
(I) Schema pezzi di ricambio

(D) Wagen

(GB) Trolley

(F) Chariot

(I) Carello

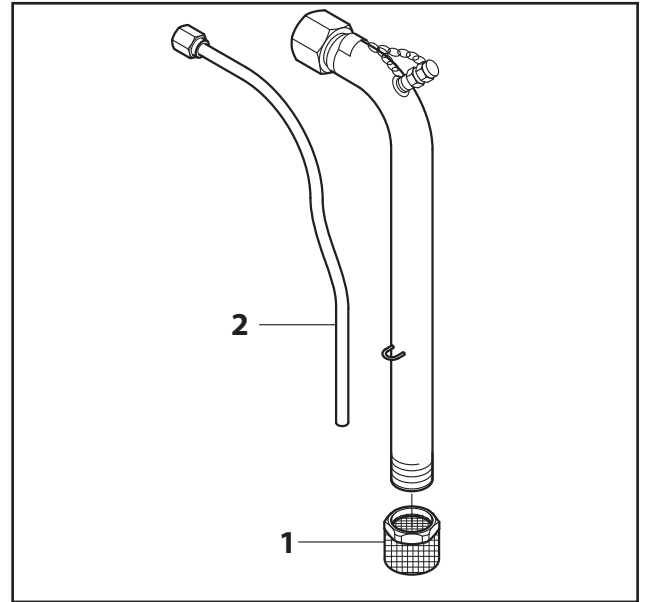


(D) Ansaugsystem

(GB) Suction system

(F) Système d'aspiration

(I) Sistema di aspirazione

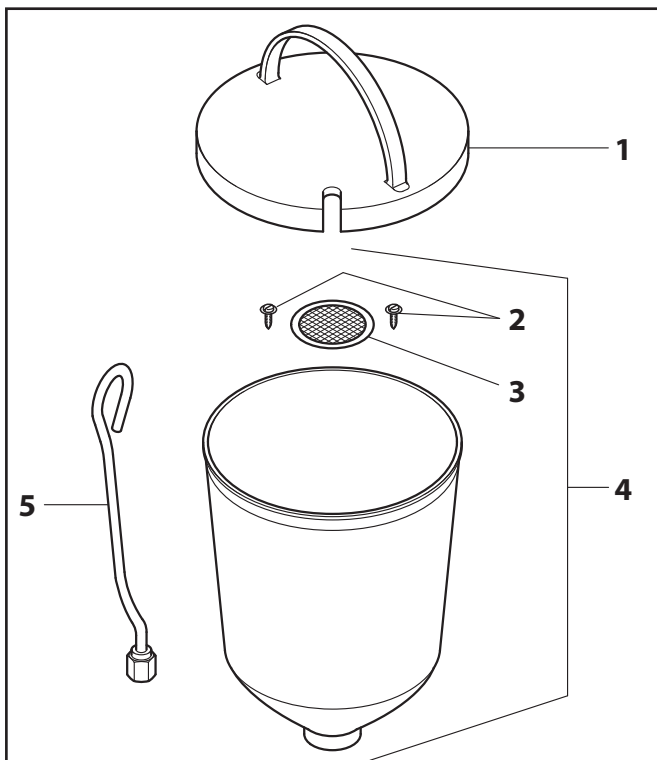


(D) Oberbehälter 5 Liter

(GB) Upper hopper, 5 litres

(F) Cuve de gravité 5 litres

(I) Contenitore superiore da 5 litri

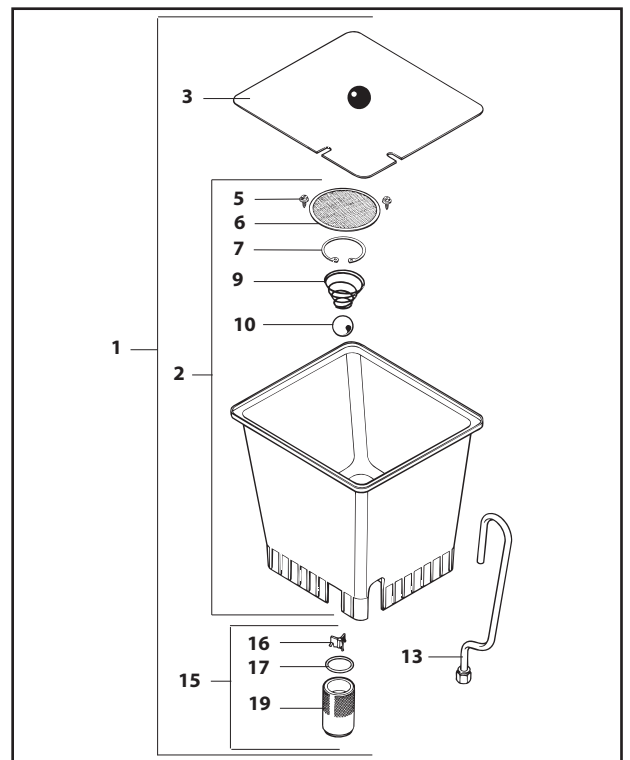


(D) Oberbehälter 20 Liter

(GB) Upper hopper, 20 litres

(F) Cuve de gravité 20 litres

(I) Contenitore superiore da 20 litri



(D) Ersatzteilbild (GB) Spare parts diagram (F) Illustration des pièces de rechange

(I) Schema pezzi di ricambio

Super Finish 27 • 31

(D) Pumpen-Aggregat

(GB) Pump aggregate

(F) Groupe de pompe

(I) Aggregato pompe

